

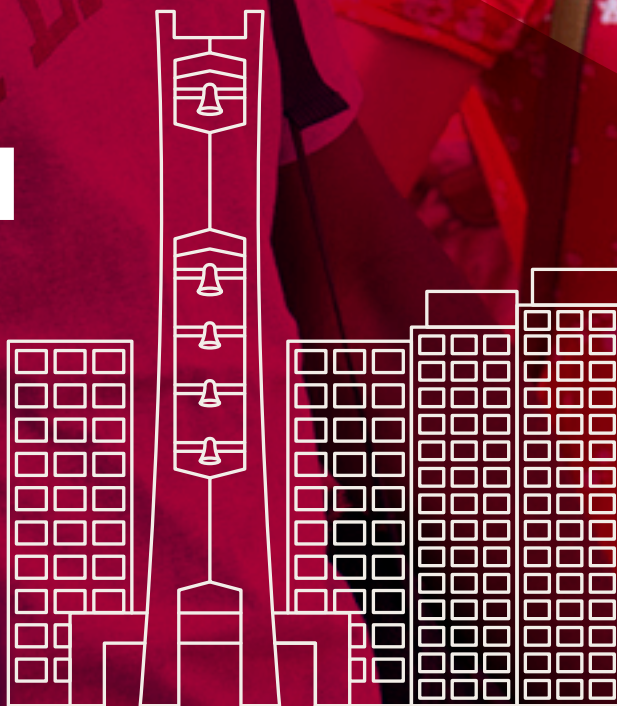
Fall 2021

# HOUSING SELECTION PROCESS

**Living on Campus Next Year**

Guide to the Fall 2021 Housing  
Selection Process

[housing.temple.edu](https://housing.temple.edu)



**FALL 2021**

# *housing selection* **PROCESS**



Temple Towers

## **Where will you live next year?**



## **How the housing selection works**



## **7 things to know about the housing contract**



We encourage all students to consider Temple's on-campus housing experience. The online Housing Selection Process makes it's easy for students to book their own housing accommodations. Students will have the opportunity to select roommates and perform roommate matching, request specific housing options, consider renter's insurance, and select a meal plan.

The Housing Selection Process works on a first-come, first-served basis. The earlier students submit a deposit, the better the chances of receiving preferred accommodations.

Students who do not receive housing will have deposits refunded or applied to their university accounts. Once the Housing Selection Process begins, twenty-four hours after students submit their deposits online, they can log into the MyHousing website through TUportal to book their own room through Online Housing Selection Process.

Please note that delays in processing deposits may occur on nonbusiness days and holidays, and during system upgrades.

1. You are agreeing to live in housing for the full academic year (August-May)
2. You must be registered for at least 12 credits by the start of the semester and no later than the end of Drop/Add to remain in University housing.
3. All new students, including transfer students, are required to contract for a minimum of 10 meals per week.
4. By agreeing to the housing license, students are also agreeing to Temple University's Code of Conduct and the Rights, Resources, and Responsibilities Guide. Students should review these policies.
5. Students with a need to remain on-campus during University break periods agree to complete a Housing Extension request on the My Housing portal.
6. A copy of the housing license is available online at [housing.temple.edu](http://housing.temple.edu).
7. A charge will be assessed for students requesting to stay over the Winter Break period.




# *the three easy stages of* **HOUSING SELECTION**



Whitehall

STAGE  
**01**   
complete the  
housing application

STAGE  
**02**   
submit the  
housing deposit

STAGE  
**03**   
select your  
housing and meal plan

## **COMPLETE THE HOUSING APPLICATION**

Starting on Monday, December 14, 2020, New and Returning Students will be able to begin the housing application process.

To start the housing application process, students will log into the **MyHousing** system via the **TUportal**.

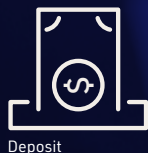
- 1** Review and agree to the Terms and Conditions of the housing license; students under the age of 18 yrs. will be required to forward this to their parents or legal guardian for approval.
- 2** Consider opting into the Grad Guard Renter's Insurance Program.
- 3** Students will create a **profile** for roommate matching.
- 4** Students can form **roommate groups** and engage in **roommate matching**.
- 5** Students will be able to review and confirm **emergency contact** information in the system.

# submit the **HOUSING DEPOSIT**

## Deposit Timeline

*New and Returning Students:*  
**December 14, 2020 through August 1, 2021**

Admissions' deadline of May 1, 2021 is an Admissions deadline not a housing deposit deadline. As noted, housing is on a first-come, first-served basis so earlier paid deposits receive preference during the Online Housing Selection Process.



- 1** Log into TUportal, and access MyHousing.
- 2** Click on the Fall 2021-Spring 2022 Housing Application, and complete the Housing Application steps listed above.
- 3** Following the completion of the Housing Application, students can pay the \$250 housing deposit using TUpay to reserve your place in the Housing Selection Process.

**NOTE:** New students will use the Next Steps Channel via the TUportal to submit their Housing Deposit.



New Students will complete the Tuition and Housing Deposit Form on the "Next Steps" Channel in TUportal to submit housing deposits. Students are prompted to pay tuition and housing deposits together.

Returning students will use **TUpay** to submit their housing deposit through the Housing Application.



*Students will be re-directed to TUpay from the Housing Application then connected back to complete the other stages of the process.*

Temple University's Bursar's Office manages the process of collecting deposits. For questions or concerns pertaining to payments and methods of payments, please contact the University's Bursar Office.

### **Bursar's Office Temple University**

1803 North Broad Street  
w Hall, Room 115  
Philadelphia, PA 19122  
Mon-Fri, 8:30 a.m.-5 p.m.  
215-204-7269

# *select your* **HOUSING & MEAL PLAN**



1300

The Online Housing Selection system makes room and meal plan selection easy.

Simply log into MyHousing and submit your application. After your application has been submitted and your deposit paid, students can begin to proceed through the Online Housing Selection Process.

You're almost there! Online Housing Selection involves a few additional steps. Students may need to consider Specialty Housing such as accommodations for students interested in Living Learning Communities, housing for students with disabilities, gender-inclusive housing, or housing for student athletes.

Also, prior to opening our online housing selection process, students are provided an online access date and time, when we first open the online process. We do this in order of when students submitted their housing deposit so we can offer a fair process for students to access rooms that are available for selection.

Both returning and new students will have an appointment access time provided to them prior to our opening of the housing selection process. Students will have one hour to select housing without any other student who paid after selecting housing. Once your time occurs, access to online housing selection will remain as long as the process remains open.

Meal Plan details can be found at :

[temple.campusdish.com](http://temple.campusdish.com)

## **THERE ARE FIVE STEPS OF THE ONLINE HOUSING SELECTION PROCESS:**

- 1 Booking terms:** Students will select the fall 2021/spring 2022 application
- 2 Roommates:** Students can engage in Roommate Matching and form Roommate Groups. During the housing selection process, students can book assignments and meals for their group members.
- 3 Search for available rooms:** For information about each hall, visit the residence hall information online.
- 4 Lock your room choice** for 10 minutes while you make your final decision.
- 5 Review summary and finish:** Students can review their housing selection and print out their summary.

## **IMPORTANT DATES: WHEN ONLINE HOUSING SELECTION OPENS**

### **RETURNING STUDENTS**

Monday, Feb. 15, 2021, 3 p.m.

### **GRADUATE STUDENTS**

#### **Room Retention**

Monday, March 1, 2021, 10 a.m.

#### **General Room Selection**

Monday, March 22, 2021, 10 a.m.

### **NEW STUDENTS**

#### **Phase 1**

Thursday, April 1, 2021, 3 p.m.

#### **Phase 2**

Monday, May 10, 2021, 3 p.m.

Questions about your  
financial aid for next year?

### **CONTACT STUDENT FINANCIAL SERVICES:**

#### **Student Financial Services**

Main Campus 1801 North Broad Street  
Conwell Hall, Ground Floor Philadelphia,  
PA 19122

#### **Office Hours**

Monday-Thursday, 8:30 a.m. - 5:00 p.m.  
Friday, 8:30 a.m. - 1:00 p.m.  
215-204-2244

[sf.s.temple.edu](https://sf.s.temple.edu)





# ROOMMATE MATCHING



## MEET YOUR MATCH

Finding a roommate can be one of the most challenging parts of the housing process. However, at Temple, we pride ourselves on offering tools to help you succeed. We understand that as you transition from high school to college, the need to find a compatible roommate is crucial to your decision-making process. **According to research, students who use social media and other online tools to meet new people, will perform better academically.** In part this is due to the choice you have in selecting the right roommate for a successful roommate experience.

After submitting the \$250 housing deposit, students are encouraged to complete their PROFILE in the Housing Application and use the Roommate Matching tool. Students will be eligible to create a profile and search for other incoming Temple students to hopefully identify someone who could become your new best friend.

Access to start your roommate search will begin once you start your Housing Application and continue as we open the housing selection process for students. Be sure to check out tutorials to see these applications in action.





## CHECK OUT THE NEW ROOMMATE MATCHING GUIDE

[CLICK HERE](#)



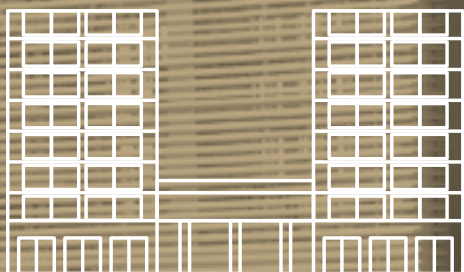
## WATCH THE NEW ROOMMATE MATCHING VIDEO

[CLICK HERE](#)





# *find* **YOUR SPACE**



*Johnson & Hardwick*



Being on campus, in the thick of it all, is one of the most exciting parts of moving away to college. There are so many opportunities for cultural, recreational, social, and academic growth on the widespread, metropolitan Temple campus. It's good to know where to get started, from which hall you'll live in to what to pack to who can help you figure it all out.

While at Temple, you'll have the option to live on-campus all four years, though housing is not guaranteed any time. If you are a first year student, you will be able to choose from seven residence halls, each unique in its own way. Traditional halls consist of a room off of a shared hallway with communal, gendered bathrooms on each floor. Suite style residence halls include an entry way, private bathrooms, and separate bedrooms. Apartment style residence halls include common spaces, in-unit bathrooms, and kitchens.

**We encourage students visit our residence hall page online to learn more about these buildings.**



# 360 degree VIRTUAL TOUR



Temple University's Housing [360 Degree Virtual Tour](#) is a unique, one of kind virtual experience created to help students and family members become familiar with on-campus housing.

Every year, the department sponsors a Showcase Your Space room decorating contest during which we document the great use of our students room space. Over the years, we've captured all buildings and unit types to illustrate the great space on campus and the pride our students have in showcasing their rooms. We hope this provides a good sense of what it's like to live on campus. Of course nothing beats seeing rooms in person and we welcome you to visit us during Experience Temple Days in the Spring.

The Virtual Tour program has been so popular on campus, other units such as our Student Center Operations and Dining Services have asked to participate in the Virtual Tour and their respective spaces can also be viewed in the [360 Degree Virtual Tour player](#).

## Traditional

| Johnson & Hardwick Hall

## Suite Style

| 1300 Residence Hall (1st, 2nd, 3rd Floor only)

| 1940 Residence Hall

| James S. White Hall

## Apartment Style

| 1300 Residence Hall (4th & 5th Floor only)

| Temple Towers

| Mitchell and Hilarie Morgan Hall

| Podiatry Apartment Complex (Graduate Housing)

## TAKE A LOOK INSIDE OUR RESIDENCE HALLS



## **RESIDENTIAL ACCOMMODATIONS AT**

*Temple University*

# **SPECIALTY HOUSING**

Temple strives to accommodate our students' residential experience in a way that best serves their educational and cultural experiences. Students with special interests on campus have their choice of four types of unique living communities: Living Learning Communities, housing for students with disabilities, Gender Inclusive Housing, and Student Athletic Housing. A separate request and approval process is required for all specialty housing with the exception Athletic Housing. All students interested in specialty housing are required to pay the \$250 housing deposit before they can submit.

LLC Application



## **LIVING LEARNING COMMUNITIES**

Temple University is proud to offer 14 Living Learning Communities in which to build partnerships among faculty, staff and students, and bring together curricular and thematic experiences through dedicated on-campus living arrangements.

Visit the Living Learning Community website at [housing.temple.edu](https://housing.temple.edu) by clicking on Campus Living tab for more information about programs and applying for accommodation in an LLC Program.

## **PRIORITY ACCESS TO SELF ASSIGNING YOUR LLC SPACE**

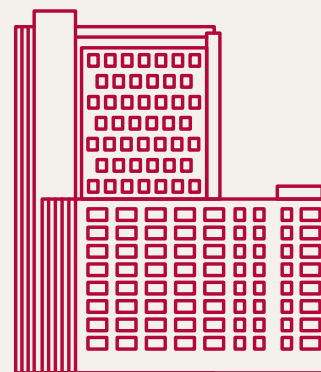
Students approved for an LLC Program at Temple University will be able to self select their housing assignments prior to the open of the online housing selection process.





## SPECIALTY HOUSING

# *accommodations for* **STUDENTS WITH DISABILITIES**



Morgan Hall

DRS Application



## **IMPORTANT DATES FOR SPECIALTY HOUSING**

### **RETURNING STUDENTS**

Monday  
**December 14, 2020**

Request Process Opens for  
Returning Students

Monday  
**February 8, 2021**

Deadline to apply/self-select  
prior to opening of General  
Housing Selection Process

### **NEW STUDENTS**

Monday  
**January 25, 2021**

Request Process Opens  
for New Students

Saturday  
**May 1, 2021**

Deadline to apply/self-select  
prior to opening of General  
Housing Selection Process

Students can request accommodations if they have been approved by the Office of Disability Resources and Services. To be considered for these accommodations, complete the Housing for Students with Disabilities Request on the MyHousing website in the 2021-2022 Academic Year Housing Application. Please note that as part of the process for becoming registered with the Office of Disability Resources and Services (DRS), students will need to submit a copy of their medical documentation. For more information, visit [housing.temple.edu](https://housing.temple.edu) and click on Campus Living tab.

**Contact Disability Resources  
and Services at 215-204-1280  
for more information.**

# OTHER IMPORTANT INFORMATION



GIH Application



## GENDER INCLUSIVE HOUSING

The Gender Inclusive Housing Program was created in 2018 as a way to expand diverse and inclusive options for our students living on campus. Gender Inclusive Housing (GIH) allows students the option to live in the same bedroom and share bathroom with another student, regardless of biological sex, gender expression, gender identity, or sexual orientation. We offer space for Gender Inclusive Housing in both buildings designated for new and transfer students and returning residents.

Students are encouraged to review details about the Gender Inclusive Housing option at: [z](#) To be considered for Gender Inclusive Housing, students will need to submit a Gender Inclusive Housing application in the MyHousing portal in the Specialty Housing section. Returning students should submit their requests by Monday, January 25, 2021. New students should submit their requests by Saturday, May 1, 2021.



## BREAK HOUSING

Students who need housing during any of the university break periods (Fall, Winter Break, or Spring Break) during the 2021-2022 academic year may request to reside in their space during these break periods. To make arrangements for break extensions, visit MyHousing via the TUportal and click on the Break Housing request forms. When visiting MyHousing, students need to access their current year housing application, then click on Housing Options to selection the Break Housing Request Form. Students requesting to stay over Winter Break are required to pay the Winter Break Housing fee.

Visit [housing.temple.edu](https://housing.temple.edu) for more information.

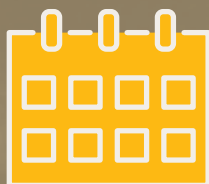
## GOOD NEIGHBOR INITIATIVE

Students are also encouraged to review the Good Neighbor Initiative program website to learn more about becoming a good neighbor and searching for properties in our area who support this Temple program. Visit the Good Neighbor Initiative program website at: [goodneighbor.temple.edu](https://goodneighbor.temple.edu)





# 2021-2022 DATES & DEADLINES



## MONDAY, DECEMBER 14, 2020

### Housing Application and Deposit Process Opens for Fall 2021 Housing Selection

Students can begin submitting their housing applications and deposits at 10:00 a.m. on Monday, December 14, 2020. Students will not be permitted to submit deposits earlier for the Fall 2021 housing process. Please note that students should not submit a deposit before this date and time as this could create delays for you in securing access to the fall housing selection process if you attempt to submit deposits early. No exceptions will be made to allow for earlier access to the deposit process.

DEC

14

## MONDAY, DECEMBER 14

Returning students interested in Returning LLC Programs, Housing for Students with Disabilities or Gender Inclusive Housing can begin to submit request for these housing options after the housing deposit and application has been submitted.

JAN

25

## MONDAY, JANUARY 25

Special Housing Applications can be submitted by New Students New students interested in New LLC Programs, Housing for Students with Disabilities or Gender Inclusive Housing can begin to submit request for these housing options after the housing deposit and application has been submitted.

FEB

15

## MONDAY, FEBRUARY 15

3:00 p.m.  
Online Housing Selection for Returning Students starts

APRIL

01

## THURSDAY, APRIL 01

3:00 p.m.  
Housing Selection Process for Freshmen and Transfers starts

MAY

01

## SATURDAY, MAY 01

3:00 p.m.  
Housing for Students with Disabilities Requests due for new students

Living Learning Community Requests due for new students

Gender-Inclusive Housing Requests due for new students

MAY

01

## SATURDAY, MAY 01

Students are encouraged to submit housing deposits and book their accommodations and meal plans by May 1, 2021.

THE LIVING LEARNING COMMUNITY PROGRAM AT

*Temple University*

# OPPORTUNITIES FOR SUCCESS



Returning Students can begin submitting their housing applications and deposits at 10:00 a.m. on Monday, December 14, 2020. New students can start on Monday, January 25, 2021. Students will not be permitted to submit deposits earlier for the Fall 2021 housing process. Please note that students should not submit a deposit before this date and time as this could create delays for you in securing access to the fall housing selection process if you attempt to submit deposits early. No exceptions will be made to allow for earlier access to

## **LLC PROGRAM GOALS**

- Develop partnerships with faculty and staff
- Dialogue with peers about academic and social issues outside the classroom
- Increase satisfaction with overall academic experience and persist at a higher rate
- Enhance students' connection with Temple University and the city of Philadelphia



Learn more online at:  
<https://housing.temple.edu/campus-living/living-learning-communities>



# *how to request an* **LLC PROGRAM & SELF SELECT YOUR SPACE**



1940

## **IMPORTANT INFORMATION**

In order for your Living Learning Community request to be officially submitted, you must agree to all program requirements of the Living Learning Community.

Regardless of when you submit your Living Learning Community request, housing assignments are on a first-come, first-served basis according to your housing deposit date.

Following an approval, students will receive an automated e-mail signifying that you can now assign your space upon the space suggestions of Living Learning Community administrators.

Roommate requests can be considered for students accepted into the program; otherwise you will need to randomly assign with another Living Learning Community student.

## **HOW TO SUBMIT YOUR REQUEST**

- 1** Pay the \$250 Housing deposit, and allow at least one (1) business day for your deposit transaction to process.
- 2** Go to MyHousing to start the request process.
- 3** Select the Living Learning Community Request after you complete your housing application and submit your housing deposit.
- 4** Your request will be reviewed and you will receive an email notification on whether or not you have been accepted into the LLC program.
- 5** After this approval, you will be given access to self select your space in the approved LLC.

# CANCELLATION DATES



If you need to cancel your housing, please be sure to adhere to these cancellation dates.

**BEFORE  
MAY 15**

No financial penalty

**MAY 16 –  
JULY 16**

Forfeit the **\$250**  
housing deposit

**JULY 17–  
AUG 16**

Forfeit the **\$250**  
housing deposit  
& charged a **\$500**  
cancellation fee

**AFTER  
AUG 16**

Forfeit the **\$250**  
housing deposit  
& charged a **\$750**  
cancellation fee



**CHECK OUT OUR VIDEOS  
ON TEMPLE HOUSING  
YOUTUBE CHANNEL!**

**CLICK HERE**



**Temple  
University**

Student Affairs

1910 Liacouras Walk  
Suite 201-301  
Philadelphia, PA 19122-6027  
Phone: 215-204-7184, option #5  
Fax: 215-204-3261  
[housing.temple.edu](http://housing.temple.edu)